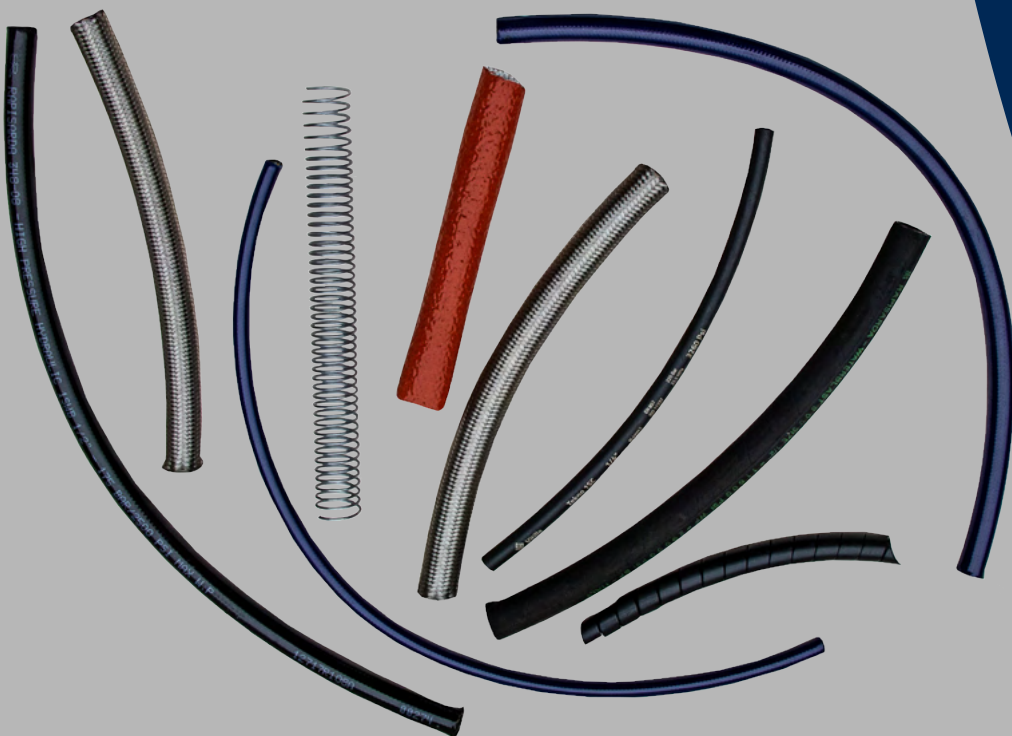


# Hose

from



# EHRCO



**Vitillo - Wire Braid Hydraulic Hose**

EN853 1SN



Page 1

**Vitillo - Wire Braid Hydraulic Hose**

EN853 2SN



Page 1

**Vitillo - Wire Braid Hydraulic Hose**

EN857 1SC



Page 2

**Vitillo - Wire Braid Hydraulic Hose**

EN857 2SC



Page 2

**Vitillo - Wire Braid Hydraulic Hose**

3SP



Page 3

**Vitillo - Wire Spiralled Reinforced Hose**

EN856 4SP



Page 3

**Vitillo - Wire Spiralled Reinforced Hose**

EN856 4SH



Page 4

**Vitillo - Wire Spiralled Reinforced Hose**

EN856 R13 - SAE 100 R13



Page 4

**Vitillo - Wire Spiralled Reinforced Hose**

EN856 R15 - SAE 100 R15



Page 5

**Waterblast 800**



Page 6

**Waterblast 1000**



Page 6

**E-flex - Wire Braid Hydraulic Hose**

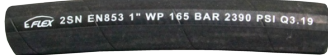
EN853 1SN



Page 7

**E-flex - Wire Braid Hydraulic Hose**

EN853 2SN



Page 7

**E-flex - Wire Braid Compact Hydraulic Hose**

EN857 2SC



Page 8

**E-flex - Hydraulic Hose R6**



Page 8



### E-flex Jet Wash Hose

1 Wire



Page 9

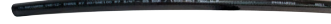
### E-flex Jet Wash Hose

2 Wire



Page 9

### Hydraulic Hose R7



Page 10

### Hydraulic Hose R8



Page 10

### Medium Pressure Hydraulic Hose

TH1W



Page 11

### Paint Spray Hose

PS1W



Page 11

### Paint Spray Hose

PS2W



Page 11

### 1 Wire Stainless Steel

Overbraid - Convoluted PTFE Hose



Page 12

### 1 Wire Stainless Steel

Overbraid - Smooth Bore PTFE Hose



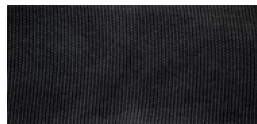
Page 12

### Galvanised Spring Guard



Page 13

### Anti Burst Sleeve



Page 13

### Pyrojacket



Page 13

### Plastic Wrap



Page 13

## Vitillo - Wire Braid Hydraulic Hose EN853 1SN



SAE 100R1AT/DIN EN 853 1SN STANDARD  
 Black, oil an environment resistant synthetic rubber  
 Reinforcement: One high tensile steel braid  
 Cover: Abrasion and weather resistant synthetic rubber  
 Temperature: -40 Degree C to +100 Degree C  
 Qualified Fluids: mineral oils, vegetable and rapeseed oils, synthetic ester based oils, oils in aqueous emulsion, water

Part No.	DN	Hose Inside Diameter		Wire Outside Diameter	Hose Outside Diameter	Working Pressure		Minimum Burst Pressure		Minimum Bend Radius	Weight Kg
		inch	mm	mm	mm	bar	psi	bar	psi	mm	Kg/m
031TV	5	3/16"	4.8	9.5	11.5	250	3620	1000	14480	90	0.18
041TV	6	1/4"	6.4	11.1	13.1	225	3260	900	13040	100	0.23
051TV	8	5/16"	7.9	12.7	14.7	214	3110	860	12440	115	0.28
061TV	10	3/8"	9.5	15.1	17.1	180	2610	720	10440	130	0.36
081TV	12	1/2"	12.8	18.2	20.2	160	2320	640	9280	180	0.43
101TV	16	5/8"	16.0	21.4	23.4	130	1880	520	7520	200	0.51
121TV	19	3/4"	19.0	25.4	27.4	105	1520	420	6080	240	0.62
161TV	25	1"	25.4	33.3	35.3	88	1270	352	5080	300	0.935
201TV	31	1-1/4"	31.8	40.5	42.9	63	910	250	3620	420	1.3
241TV	38	1-1/2"	38.1	47.0	50.1	50	720	200	2880	500	1.55
321TV	51	2"	50.8	60.4	63.4	40	580	160	2320	630	2.3

## Vitillo - Wire Braid Hydraulic Hose EN853 2SN



SAE 100R2AT/DIN EN 853 2SN STANDARD  
 Black, oil an environment resistant synthetic rubber  
 Reinforcement: One high tensile steel braid  
 Cover: Abrasion and weather resistant synthetic rubber  
 Temperature: -40 Degree C to +100 Degree C  
 Qualified Fluids: mineral oils, vegetable and rapeseed oils, synthetic ester based oils, oils in aqueous emulsion, water

Part No.	DN	Hose Inside Diameter		Wire Outside Diameter	Hose Outside Diameter	Working Pressure		Minimum Burst Pressure		Minimum Bend Radius	Weight Kg
		inch	mm	mm	mm	bar	psi	bar	psi	mm	Kg/m
032TV	5	3/16"	4.8	11.1	13.4	415	6020	1607	23295	89	0.32
042TV	6	1/4"	6.4	12.7	15.0	400	5800	1600	23200	102	0.36
052TV	8	5/16"	7.9	14.3	16.6	350	5075	1400	20300	114	0.45
062TV	10	3/8"	9.5	16.7	19.0	330	4785	1320	19140	127	0.54
082TV	13	1/2"	12.7	19.8	22.2	275	3990	1101	15960	178	0.68
102TV	16	5/8"	15.9	23.0	25.4	250	3625	1000	14500	203	0.8
122TV	19	3/4"	19.0	27.0	29.3	215	3120	850	12325	241	0.94
162TV	25	1"	25.4	34.9	38.0	165	2390	650	9425	305	1.35
202TV	32	1-1/4"	31.8	44.5	48.3	125	1810	500	7250	419	2.15
242TV	28	1-1/2"	38.1	50.8	54.6	90	1305	360	5220	508	2.65
322TV	51	2"	50.8	63.5	67.3	80	1160	320	4640	635	3.42



## Vitillo - Wire Braid Hydraulic Hose EN857 1SC



DIN-EN857 1SC STANDARD  
 Black, oil an environment resistant synthetic rubber  
 Reinforcement: One high tensile steel braid  
 Cover: Abrasion and weather resistant synthetic rubber  
 Temperature: -40 Degree C to +100 Degree C  
 Qualified Fluids: mineral oils, vegetable and rapeseed oils, glycol and polyglycol based oils, synthetic ester based oils, oils in aqueous emulsion, water

Part No.	DN	Hose Inside Diameter		Hose Outside Diameter mm	Working Pressure		Burst Pressure		Minimum Bend Radius mm	Weight Kg Kg/m
		inch	mm		bar	psi	bar	psi		
041SCV	6	1/4"	6.4	12.2	225	3260	900	13040	50	0.175
081SCV	12	1/2"	12.8	19.1	160	2320	640	9280	70	0.35

## Vitillo - Wire Braid Hydraulic Hose EN857 2SC



DIN-EN857 2SC STANDARD  
 Black, oil an environment resistant synthetic rubber  
 Reinforcement: One high tensile steel braid  
 Cover: Abrasion and weather resistant synthetic rubber  
 Temperature: -40 Degree C to +100 Degree C  
 Qualified Fluids: mineral oils, vegetable and rapeseed oils, glycol and polyglycol based oils, synthetic ester based oils, oils in aqueous emulsion, water

Part No.	DN	Hose Inside Diameter		Hose Outside Diameter mm	Working Pressure		Burst Pressure		Minimum Bend Radius mm	Weight Kg Kg/m
		inch	mm		bar	psi	bar	psi		
042SCV	6	1/4"	6.4	13.3	400	5800	1600	23200	45	0.3
062SCV	10	3/8"	9.5	17.0	330	4785	1319	19120	65	0.42
082SCV	13	1/2"	12.8	20.4	276	4000	1103	16000	80	0.52
102SCV	16	5/8"	16.0	23.8	250	3620	999	14480	90	0.63
122SCV	19	3/4"	19.0	27.5	215	3120	861	12480	120	0.81
162SCV	25	1"	25.4	35.3	166	2400	660	9600	160	1.2



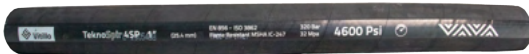
## Vitillo - Wire Braid Hydraulic Hose 3SP



Black, oil an environment resistant synthetic rubber  
 Reinforcement: Three high tensile steel braid  
 Cover: Abrasion and weather resistant synthetic rubber  
 Temperature: -40 Degree C to +100 Degree C  
 Qualified Fluids: mineral oils, vegetable and rapeseed oils,  
 glycol and polyglycol based oils, synthetic ester based oils,  
 oils in aqueous emulsion, water

Part No.	DN	Hose Inside Diameter		Hose Outside Diameter mm	Working Pressure		Burst Pressure		Minimum Bend Radius mm	Weight Kg Kg/m
		inch	mm		bar	psi	bar	psi		
063SP	10	3/8"	9.5	21.3	500	7250	2000	29000	120	0.8
083SP	12	1/2"	12.8	24.8	470	6850	1880	27400	160	0.91
123SP	19	3/4"	19.0	31.3	380	5500	1520	22000	260	1.49
163SP	25	1"	25.4	38.8	330	4800	1320	19200	310	2.1

## Vitillo - Wire Spiralled Reinforced Hose EN856 4SP

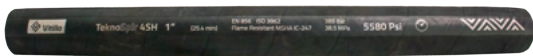


DIN-EN856 4SP Standard  
 Black, oil an environment resistant synthetic rubber  
 Reinforcement: Four high tensile steel spirals  
 Temperature: -40 Degree C to +100 Degree C  
 Qualified Fluids: mineral oils, vegetable and rapeseed oils,  
 glycol and polyglycol based oils, synthetic ester based oils,  
 oils in aqueous emulsion, water

Part No.	DN	Hose Inside Diameter		Hose Outside Diameter mm	Working Pressure		Burst Pressure		Minimum Bend Radius mm	Weight Kg Kg/m
		inch	mm		bar	psi	bar	psi		
04R9RV	6	1/4"	6.4	17.9	500	7250	2000	29000	150	0.6
06R9RV	10	3/8"	9.5	21.4	460	6650	1840	26600	180	0.78
08R9RV	12	1/2"	12.8	24.6	425	6150	1700	24600	230	0.92
10R9RV	16	5/8"	16.0	28.2	400	5800	1600	23200	250	1.155
12R9RV	19	3/4"	19.0	32.2	380	5500	1520	22000	300	1.52
16R9RV	25	1"	25.4	39.0	320	4600	1280	18400	340	2
20R9RV	31	1-1/4"	31.8	50.2	210	3000	840	12000	460	3
24R9RV	38	1-1/2"	38.1	57.0	185	2650	740	10600	560	3.65



## Vitillo - Wire Spiralled Reinforced Hose EN856 4SH



Black, oil and environment resistant synthetic rubber  
 Reinforcement: Four high tensile steel spirals  
 Temperature: -40 Degree C to +100 Degree C  
 Qualified Fluids: mineral oils, vegetable and rapeseed oils, glycol and polyglycol based oils, synthetic ester based oils, oils in aqueous emulsion, water

Part No.	DN	Hose Inside Diameter		Hose Outside Diameter	Working Pressure		Burst Pressure		Minimum Bend Radius	Weight Kg
		inch	mm		bar	psi	bar	psi		
12HDMSV	19	3/4"	19.0	32.2	420	6090	1680	24360	280	1.6
16HDMSV	25	1"	25.4	38.1	385	5580	1540	22320	340	1.95
20HDMSV	31	1-1/4"	31.8	45.5	350	5070	1400	20280	460	2.45
24HDMSV	38	1-1/2"	38.1	53.5	300	4350	1200	17400	560	3.41

## Vitillo - Wire Spiralled Reinforced Hose EN856 R13 - SAE 100 R13



DIN-EN856 - SAE 100 R13 Standard  
 Black and brown, oil and environment resistant synthetic rubber  
 Reinforcement: Four high tensile steel spirals (DN19-31) six high tensile steel spirals (DN38-51)  
 Temperature: -40 Degree C to +120 Degree C  
 Qualified Fluids: mineral oils, vegetable and rapeseed oils, glycol and polyglycol based oils, synthetic ester based oils, oils in aqueous emulsion, water

Part No.	DN	Hose Inside Diameter		Hose Outside Diameter	Working Pressure		Burst Pressure		Minimum Bend Radius	Weight Kg
		inch	mm		bar	psi	bar	psi		
12R13V	19	3/4"	19.0	32.0	350	5070	1400	20280	240	1.65
20R13V	31	1-1/4"	31.8	49.0	350	5070	1400	20280	420	3.33
24R13V	38	1-1/2"	38.1	57.8	350	5070	1400	20280	500	4.775





## Vitillo - Wire Spiralled Reinforced Hose EN856 R15 - SAE 100 R15



DIN-EN856 - SAE 100 R15 Standard  
 Black, oil and environment resistant synthetic rubber  
 Reinforcement: Four high tensile steel spirals (DN19-25) six high tensile steel spirals (DN31-38)  
 Temperature: -40 Degree C to +120 Degree C  
 Qualified Fluids: mineral oils, vegetable and rapeseed oils, glycol and polyglycol based oils, synthetic ester based oils, oils in aqueous emulsion, water

Part No.	DN	Hose Inside Diameter		Hose Outside Diameter	Working Pressure		Burst Pressure		Minimum Bend Radius	Weight Kg
		inch	mm	mm	bar	psi	bar	psi	mm	Kg/m
12R15V	19	3/4"	19.0	32.0	420	6090	1680	24360	265	1.5
16R15V	25	1"	24.4	38.2	420	6090	1680	24360	267	2.1
20R15V	31	1-1/4"	31.8	49.8	420	6090	1680	24360	267	3.75
24R15V	38	1-1/2"	38.1	57.2	420	6090	1680	24360	315	4.8



## Waterblast 800



Used for high pressure water blast applications  
 Oil and weather resistant black synthetic rubber  
 Reinforcement: Four spiral layers of high tensile steel wire  
 Temperature: Up to +85 Degree C  
 Qualified Fluids: water, water glycol hydraulic fluids

Part No.	DN	Hose Inside Diameter		Hose Outside Diameter	Working Pressure		Burst Pressure		Minimum Bend Radius	Weight Kg
		inch	mm		bar	psi	bar	psi		
08WB800	12	1/2"	12.7	24.6	800	11600	2000	29000	200	1.02
12WB800	19	3/4"	19.0	32.8	800	11600	2000	29000	250	1.93

## Waterblast 1000



Used for high pressure water blast applications  
 Oil and weather resistant black synthetic rubber  
 Reinforcement: Four spiral layers of high tensile steel wire  
 Temperature: Up to +85 Degree C  
 Qualified Fluids: water, water glycol hydraulic fluids

Part No.	DN	Hose Inside Diameter		Hose Outside Diameter	Working Pressure		Burst Pressure		Minimum Bend Radius	Weight Kg
		inch	mm		bar	psi	bar	psi		
08WB1000	12	1/2"	12.7	27.0	1000	14500	2500	36250	200	1.36
12WB1000	19	3/4"	19.0	32.4	1000	14500	2500	36250	310	1.8



## E-flex - Wire Braid Hydraulic Hose

### EN853 1SN



SAE 100R1AT/DIN EN 853 1SN STANDARD

Tube Oil resistant synthetic rubber

Reinforcement: One high tensile steel wire braid

Cover: Abrasion and weather resistant synthetic rubber

Temperature: -40 Degree C to +100 Degree C

Part No.	DN	Hose Inside Diameter		Wire Outside Diameter	Hose Outside Diameter	Working Pressure		Burst Pressure		Minimum Bend Radius	Weight Kg
		inch	mm	mm	mm	bar	psi	bar	psi	mm	Kg/m
031TC	5	3/16"	4.8	9.5	12.5	250	3625	1000	14500	90	0.20
041TC	6	1/4"	6.4	11.1	14.1	225	3260	900	13050	100	0.25
051TC	8	5/16"	7.9	12.7	15.7	215	3120	850	12325	115	0.31
061TC	10	3/8"	9.5	15.1	18.1	180	2610	720	10440	130	0.36
081TC	13	1/2"	12.7	18.3	21.4	160	2320	640	9280	180	0.45
101TC	16	5/8"	15.9	21.4	24.5	130	1885	520	7540	200	0.52
121TC	19	3/4"	19.0	25.4	28.5	105	1520	420	6090	240	0.65
161TC	25	1"	25.4	33.3	36.6	88	1280	350	5075	300	0.91
201TC	32	1-1/4"	31.8	40.5	44.8	63	910	250	3625	420	1.30
241TC	38	1-1/2"	38.1	46.8	52.1	50	725	200	2900	500	1.70
321TC	51	2"	50.8	60.2	65.5	40	580	160	2320	630	2.00

## E-flex - Wire Braid Hydraulic Hose

### EN853 2SN



SAE 100R2AT/DIN EN 853 2SN STANDARD

Tube Oil resistant synthetic rubber

Reinforcement: Two high tensile steel wire braid

Cover: Abrasion and weather resistant synthetic rubber

Temperature: -40 Degree C to +100 Degree C

Part No.	DN	Hose Inside Diameter		Wire Outside Diameter	Hose Outside Diameter	Working Pressure		Burst Pressure		Minimum Bend Radius	Weight Kg
		inch	mm	mm	mm	bar	psi	bar	psi	mm	Kg/m
032TC	5	3/16"	4.8	11.1	14.1	415	6020	1607	23295	90	0.32
042TC	6	1/4"	6.4	12.7	15.7	400	5800	1600	23200	100	0.36
052TC	8	5/16"	7.9	14.3	17.3	350	5075	1400	20300	115	0.45
062TC	10	3/8"	9.5	16.7	19.7	330	4785	1320	19140	130	0.54
082TC	13	1/2"	12.7	19.8	23.0	275	3990	1101	15960	180	0.68
102TC	16	5/8"	15.9	23.0	26.2	250	3625	1000	14500	200	0.80
122TC	19	3/4"	19.0	27.0	30.1	215	3120	850	12325	240	0.94
162TC	25	1"	25.4	34.9	38.9	165	2390	650	9425	300	1.35
202TC	32	1-1/4"	31.8	44.5	49.5	125	1810	500	7250	420	2.15
242TC	28	1-1/2"	38.1	50.8	55.9	90	1305	360	5220	500	2.65
322TC	51	2"	50.8	63.5	68.6	80	1160	320	4640	630	3.42



## E-flex - Wire Braid Compact Hydraulic Hose EN857 2SC



DIN-EN 857 2SC STANDARD  
 Tube Oil resistant synthetic rubber  
 Reinforcement: Two high tensile steel wire braid  
 Cover: Abrasion and weather resistant synthetic rubber  
 Temperature: -40 Degree C to +100 Degree C

Part No.	DN	Hose Inside Diameter		Hose Outside Diameter mm	Working Pressure		Burst Pressure		Minimum Bend Radius mm	Weight Kg Kg/m
		inch	mm		bar	psi	bar	psi		
042SC	6	1/4"	6.4	14.2	400	5800	1600	23200	75	0.30
062SC	10	3/8"	9.5	18.3	330	4785	1320	19140	90	0.42
082SC	13	1/2"	12.7	21.5	275	3990	1100	15950	130	0.54
122SC	19	3/4"	19.0	28.6	215	3120	860	12470	200	0.8
162SC	25	1"	25.4	36.6	165	2390	660	9570	250	1.15

## E-flex - Hydraulic Hose R6



SAE J517 TYPE 100 R6 STANDARD  
 Tube Oil resistant synthetic rubber  
 Reinforcement: One steel fibre braid (1T/B)  
 Cover Compound: Abrasion and weather resistant synthetic rubber  
 Temperature: -40 Degree C to +100 Degree C

Part No.	DN	Hose Inside Diameter		Hose Outside Diameter mm	Working Pressure		Burst Pressure		Minimum Bend Radius mm	Weight Kg Kg/m
		inch	mm		bar	psi	bar	psi		
03R6	5	3/16"	4.8	11.1	34	500	138	2000	50	0.11
04R6	6	1/4"	6.4	12.7	28	400	110	1600	65	0.15
05R6	8	5/16"	7.9	14.3	28	400	110	1600	75	0.16
06R6	10	3/8"	9.5	15.9	28	400	110	1600	75	0.18
08R6	13	1/2"	12.7	19.8	28	400	110	1600	100	0.26
10R6	16	5/8"	15.9	23.0	24	350	97	1400	125	0.29
12R6	19	3/4"	19.0	26.6	21	300	83	1200	150	0.4
16R6										



## E-flex Jet Wash Hose (1 & 2 wire)

### 1 Wire



Tube Oil resistant synthetic polymer  
 Reinforcement: One or Two high tensile steel wire braid  
 Cover: Oil Abrasion ozone and weather resistant synthetic rubber  
 Colour: Black, Grey, Blue and others by request  
 Temperature: -40 Degree C to +100 Degree C

Part No.	Inside Diameter		Outside Diameter	Max Working Pressure		Min Burst Pressure		Minimum Bend Radius	Weight Kg
	inch	mm		bar	psi	bar	psi		
041SS	1/4"	6.4	13.2	276	4000	828	12000	100	0.22
051SS	5/16"	8.0	14.8	276	4000	828	12000	115	0.26
061SS	3/8"	9.5	17.2	276	4000	828	12000	130	0.33
081SS	1/2"	12.7	20.4	206	3000	620	9000	180	0.41

### 2 Wire



Part No.	Inside Diameter		Outside Diameter	Max Working Pressure		Min Burst Pressure		Minimum Bend Radius	Weight Kg
	inch	mm		bar	psi	bar	psi		
042SS	1/4"	6.4	15.0	400	5800	1200	18000	100	0.38
052SS	5/16"	8.0	16.5	400	5800	1200	18000	115	0.43
062SS	3/8"	9.5	18.9	400	5800	1200	18000	130	0.55
082SS	1/2"	12.7	22.2	400	5800	1200	18000	180	0.64



## Hydraulic Hose R7



Also available in R7 TWIN

The thermoplastic hose R7 is composed of inner tuber (nylon), reinforcement layer (high strength fibre) and outer cover (high flexibility nylon or polyurethane). It is lightweight, flexible, with a smooth tube and little flow resistance. The hydraulic hose provides minimal pressure loss and excellent chemical and pulse resistant properties.

Part No.	DN	Hose Inside Diameter		Hose Outside Diameter mm	Working Pressure		Burst Pressure		Minimum Bend Radius mm	Weight Kg Kg/m
		inch	mm		bar	psi	bar	psi		
02R7	3	1/8"	3.3	8.5	172	2500	690	10000	13	0.037
03R7	5	3/16"	4.8	10.8	210	3045	840	12180	20	0.068
04R7	6	1/4"	6.4	13.0	192	2780	770	11165	33	0.085
05R7	8	5/16"	7.9	15.1	175	2535	700	10150	46	0.103
06R7	10	3/8"	9.5	17.0	157	2275	630	9135	51	0.141
08R7	13	1/2"	12.7	20.7	140	2030	560	8120	76	0.21
12R7	19	3/4"	19.0	27.1	87	1260	350	5075	127	0.287
16R7	25	1"	25.4	34.0	70	1015	280	4060	203	0.542

## Hydraulic Hose R8



The thermoplastic hose R8 is composed of inner tuber (nylon), reinforcement layer (high strength fibre) and outer cover (high flexibility nylon or polyurethane). It is lightweight, flexible, with a smooth tube and little flow resistance. The hydraulic hose provides minimal pressure loss and excellent chemical and pulse resistant properties.

Part No.	DN	Hose Inside Diameter		Hose Outside Diameter mm	Working Pressure		Burst Pressure		Minimum Bend Radius mm	Weight Kg Kg/m
		inch	mm		bar	psi	bar	psi		
03R8	5	3/16"	4.8	14.6	350	5075	1400	20300	90	0.086
04R8	6	1/4"	6.4	16.8	350	5075	1400	20300	100	0.097
05R8	10	3/8"	9.5	20.3	280	4060	1120	16240	125	0.178
06R8	13	1/2"	12.7	24.6	245	3550	980	14210	180	0.216
08R8	16	5/8"	16.1	29.8	192	2780	770	11165	205	0.312
10R8	19	3/4"	19.2	33.0	157	2275	630	9135	240	0.36
12R8	25	1"	25.7	38.6	140	2030	560	8120	300	0.505



## Medium Pressure Hydraulic Hose

### TH1W



Exceeds SAE / EN One wire braided hose specification  
 Core: Thermoplastic Elastomer  
 Reinforcement: Single braid of steel wire  
 Cover: Polyurethane, Black colour  
 Application: medium pressure hydraulic lines 100 to 350 bar.  
 Suitable for hydraulic application with increased resistance to abrasion for use with petroleum, synthetic or water based fluids in hydraulic systems.  
 Temperature Range: Continuous --40 - +100 degrees centigrade

Part No.	DN	Hose Inside Diameter		Hose Outside Diameter mm	Working Pressure		Burst Pressure		Minimum Bend Radius mm	Weight Kg Kg/m
		inch	mm		bar	psi	bar	psi		
03TH1W	05	3/16"	4.8	9.7	350	5000	1200	17400	30	141
04TH1W	06	1/4"	6.4	11.7	300	4350	1100	15600	40	182
05TH1W	08	5/16"	8.0	13.6	240	3500	960	14000	50	222
06TH1W	10	3/8"	9.5	15.2	225	3265	880	12800	60	263
08TH1W	12	1/2"	12.7	18.4	190	2750	700	10000	75	350
12TH1W	20	3/4"	19.0	25.9	130	1890	460	6400	150	550

## Paint Spray Hose

### PS1W



Core: Polyamide  
 Reinforcement: Single braid of steel wire  
 Cover: Polyurethane, Blue colour  
 Application: airless paint spray systems for 100 to 350 bar.  
 Suitable for applications requiring chemical resistance to solvents and aggressive fluids.  
 Temperature Range: Continuous --40 - +100 degrees centigrade

Part No.	DN	Hose Inside Diameter		Hose Outside Diameter mm	Working Pressure		Burst Pressure		Minimum Bend Radius mm	Weight Kg Kg/m
		inch	mm		bar	psi	bar	psi		
04PS1W	06	1/4"	6.4	11.7	320	4650	1280	18600	40	180
06PS1W	10	3/8"	9.6	15.2	250	3600	1000	14400	60	257

## Paint Spray Hose

### PS2W



Core: Polyamide  
 Reinforcement: Double braids of steel wire  
 Cover: Polyurethane, Blue colour  
 Application: airless paint spray systems for 150 to 450 bar.  
 Suitable for applications requiring chemical resistance to solvents and aggressive fluids.  
 Temperature Range: Continuous --40 - +100 degrees centigrade

Part No.	DN	Hose Inside Diameter		Hose Outside Diameter mm	Working Pressure		Burst Pressure		Minimum Bend Radius mm	Weight Kg Kg/m
		inch	mm		bar	psi	bar	psi		
06PS2W	10	3/8"	9.5	17.5	380	5500	1520	22000	127	483



## 1 Wire Stainless Steel Overbraid - Convuluted PTFE Hose



Core: Hellically Convolutud P.T.F.E  
 Reinforcement: Single braid of 304/316 series of stainless steel wire  
 Cover: Polyurethane, Black colour  
 Application: Excellent chemical resistance, non contamination properties. Used in general applications.  
 Temperature Range: Continuous --54 - +260

Part No.	Hose Inside Diameter		Hose Outside Diameter	Working Pressure		Burst Pressure		Minimum Bend Radius	Weight Kg
	inch	mm		bar	psi	bar	psi		
04PTFEC	1/4"	6.5	10.4	175	2500	700	10000	20	149
06PTFEC	3/8"	9.7	13.7	150	2200	600	8800	20	182
08PTFEC	1/2"	12.8	18.4	135	1960	540	7840	25	289
10PTFEC	5/8"	16.0	21.0	100	1450	400	5800	50	349
12PTFEC	3/4"	19.2	25.9	80	1160	320	4640	65	494
16PTFEC	1"	25.5	33.8	55	800	220	3200	90	677

## Core Smooth Bore PTFE



Core: Smooth Bore P.T.F.E  
 Reinforcement: Single braid of 304/316 series of stainless steel wire  
 Cover: Polyurethane, Black colour  
 Application: Excellent chemical resistance, non contamination properties. Used in general applications.  
 Temperature Range: Continuous --54 - +260

Part No.	Hose Inside Diameter		Hose Outside Diameter	Working Pressure		Burst Pressure		Minimum Bend Radius	Weight Kg
	inch	mm		bar	psi	bar	psi		
04PTFEB	1/4"	6.5	9.7	210	3000	840	12000	75	121
06PTFEB	3/8"	9.7	12.6	165	2400	660	9600	125	170
08PTFEB	1/2"	12.8	16.5	120	1750	480	7000	165	234
10PTFEB	5/8"	16.0	19.8	88	1270	352	5080	200	318
12PTFEB	3/4"	19.2	22.9	75	1100	300	4400	230	395
16PTFEB	1"	25.5	29.5	62	900	248	3600	300	528





## Protective Covers

### Galvanised Spring Guard



Part No.	Hose Inner Diameter mm
SG16	16
SG18	18
SG21	21
SG22	22
SG23	23
SG25	25
SG26	26
SG30	30
SG31	31
SG33	33
SG40	40
SG42	42
SG46	46
SG50	50
SG56	56
SG60	60

### Anti Burst Sleeve



Part No.	Hose Inner Diameter mm
FGT-0.67	17
FGT-0.79	20
FGT-0.90	22.8
FGT-1.00	25.4
FGT-1.06	26.9
FGT-1.25	31.7
FGT-1.38	35.2
FGT-1.57	39.9
FGT-1.75	44.5
FGT-1.85	47
FGT-2.09	53
FGT-2.64	67
FGT-2.87	72.9
FGT-2.96	75.2

### Pyrojacket



Part No.	Hose Inner Diameter mm
PJ04	6
PJ08	13
PJ14	22
PJ16	25
PJ20	32
PJ24	38
PJ26	41
PJ36	57

### Plastic Wrap



Part No.	Hose Inner Diameter mm
PG16	16
PG20	20
PG25	25
PG32	32
PG40	40
PG50	50

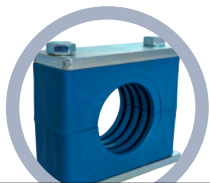


We will fit all of the above to assemblies we manufacture upon request. We also sell all of the above by the metre

Ehrco is the largest independent supplier of hydraulic hose, fittings and related products in the UK distribution market. We carry stocks of over £1M of the highest quality products and offer an excellent service to our customers.

Founded in 1992, Ehrco has evolved to become a recognised supplier of hydraulic components suitable for all industry types in the market. Trustworthy quality connections have given our customers peace of mind - for over 25 Years.

## We Hold Vast Stocks of Hydraulic Components



Pipe Clamps



Swaged Fittings



Hydraulic Hose



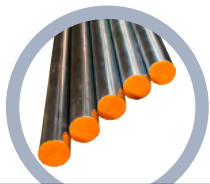
Compression Fittings



Adaptors



Flanges



Steel Tube



Q R Couplings



Socket Weld



## TRADE COUNTER

We have a fully stocked trade counter where hose assemblies can be made while you wait



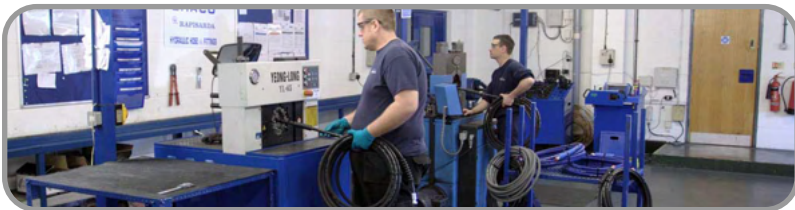
## PRESSURE TESTING

Up to 2000 BAR with certification on request



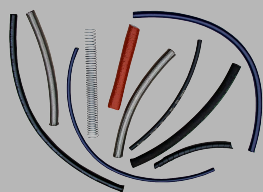
## HOSE ASSEMBLY WORKSHOP

We are able to produce singles, batches and kits for hydraulic, jet wash, LPG & paint spray applications



EHRCO Limited  
Unit H, Peartree Business Park,  
Crackley Way, Peartree Lane,  
Dudley DY2 0UW  
T: 01384 245000  
F: 01384 245 001  
e: sales@ehrco.ltd.uk





Unit H, Peartree Business Park, Crackley Way, Peartree Lane, Dudley DY2 0UW

T: 01384 245000 F: 01384 245 001 e: [sales@ehrco.ltd.uk](mailto:sales@ehrco.ltd.uk)